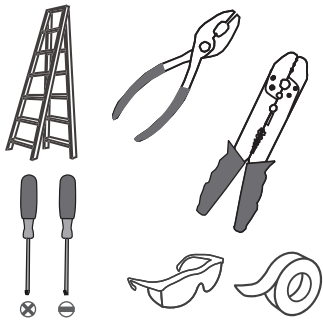
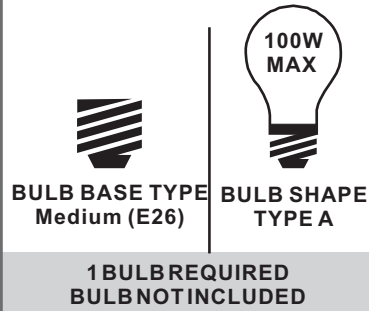


**Tools Required**



**Light Source**



**Warnings and Cautions**

Turn off the electricity at the circuit breaker before installation. Consult a licensed electrician if in doubt about installation.

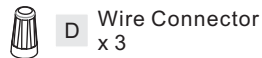
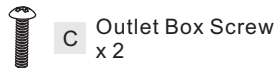
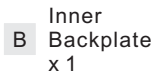
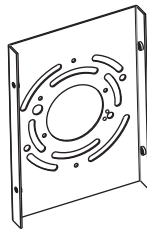
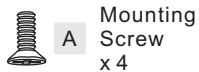
Turn off power to the fixture and allow the bulbs to cool before replacing.

**Package Contents**

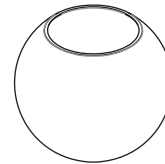
**Preparation:** Identify and inspect all parts before beginning the installation.

Missing or damaged parts? Contact your original place of purchase.

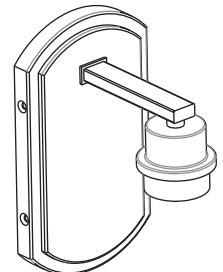
**PARTS BAG**



**Note:** Shade shape is for illustration purpose only. Your shade shape may vary from illustration.



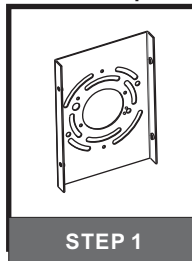
**E** Shade (Varies according to style purchased) x 1



**F** Fixture Body x 1

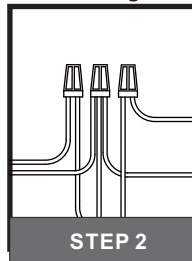
**Table of Contents**

**Inner Backplate**



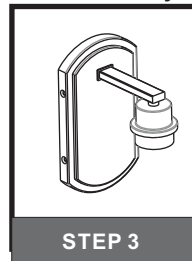
STEP 1

**Wiring**



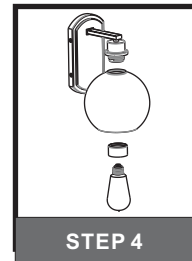
STEP 2

**Fixture Body**



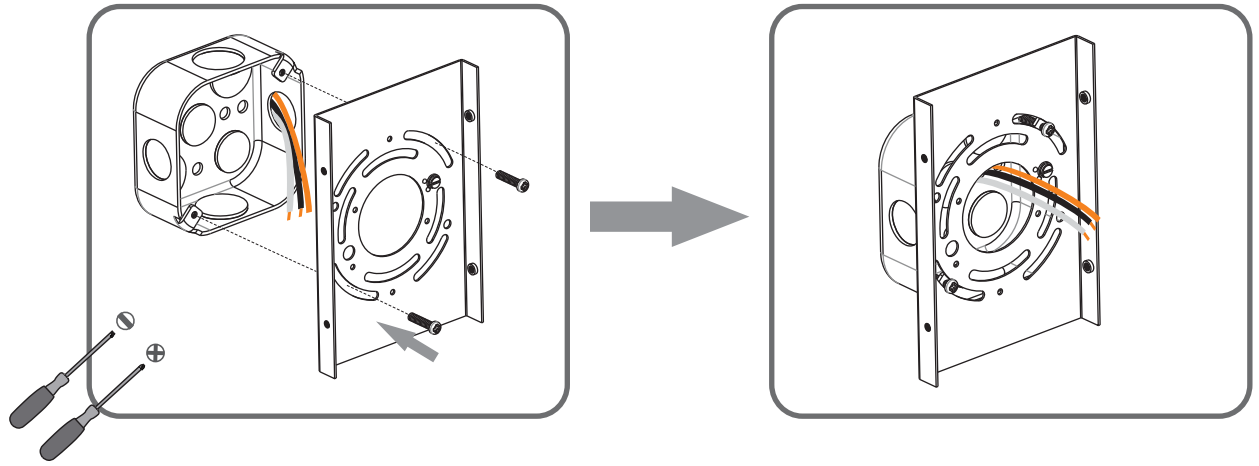
STEP 3

**Shade & Bulb**

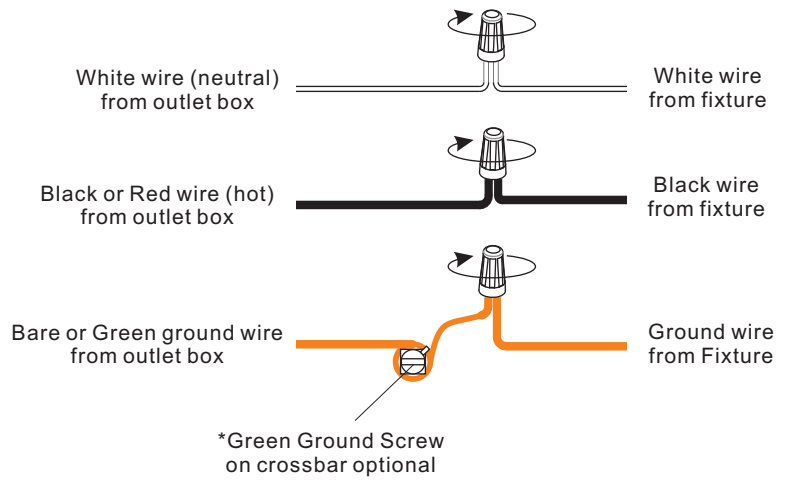


STEP 4

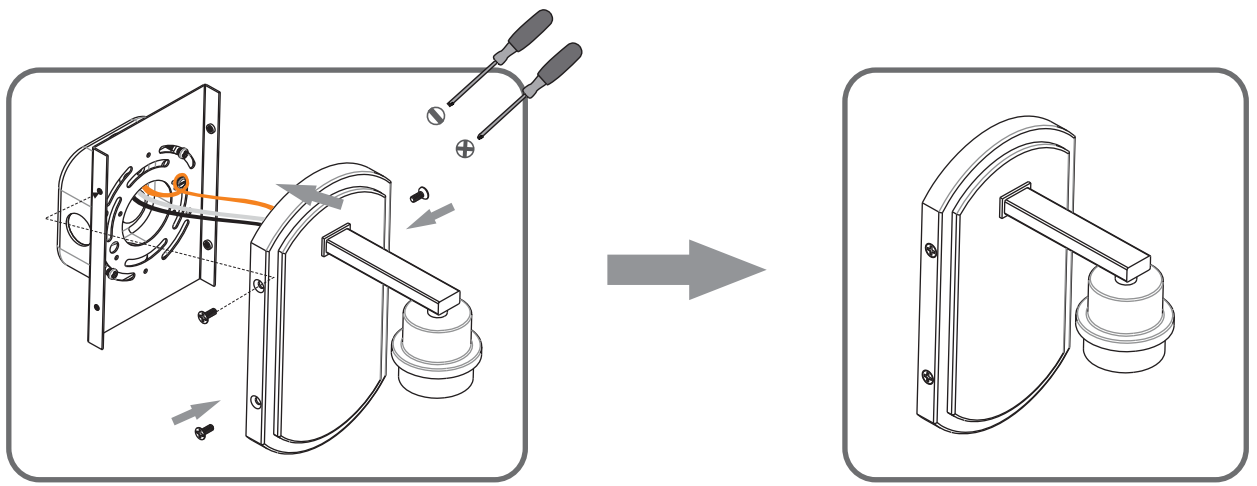
### STEP 1



### STEP 2

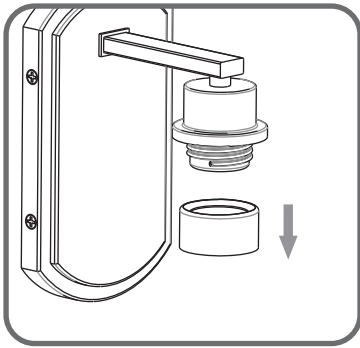


### STEP 3



**STEP 4**

**1**



**2**

**Note: Shade shape is for illustration purpose only. Your shade shape may vary from illustration.**

